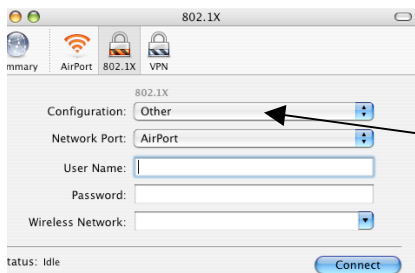


Getting connected to the Berklee Wireless Network

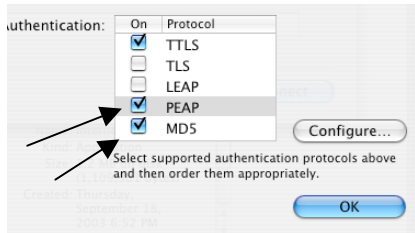
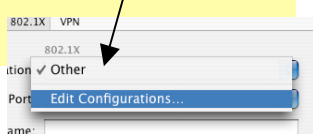
Spring 2005



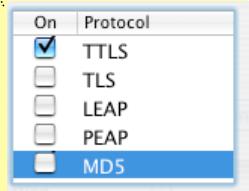
1. From the File Menu, select **New 802.1X Connection...**



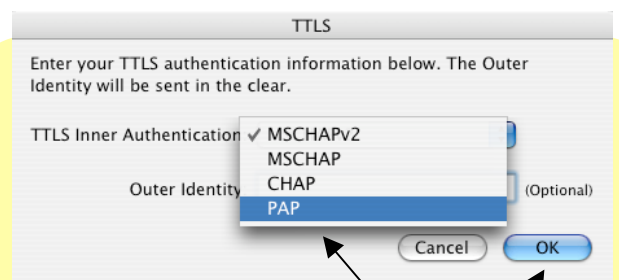
2. From **Configuration**, click on **Other** and select **Edit Configurations...**



3. From **Authentication** De-select all other **Protocols** except **TTLS**.

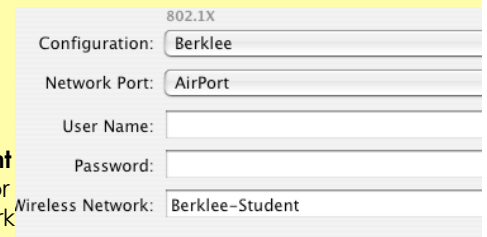


4. Press on **TTLS** and the click on **Configure**



5. From the TTLS Inner Authentication select **PAP**, then click **OK**

6. Type **Berklee-Student** in the space for **Wireless Network**



User Name: rpoza

Password: [masked]

Connect

7. Type your **User Name** and **Password** and then click **Connect**

8. Be patient, due that the first time it connects it might take quite a long time. IN CASE A LONG WINDOW WITH CERTIFICATIONS APPEARS IN YOUR SCREEN, SELECT AT THE BOTTOM OF IT "ACCEPT ALL".